

Qualitative Analysis Report

| | | | |
|-------------------------------|---|----------------------|----------------------|
| Data Filename | 2015210-EX00393-QTOF6520-Dus-GlyTCA-neuro-Std00-f1-vol10-I1.d | Sample Name | sd0 |
| Sample Type | Sample | Position | P1-F1 |
| Instrument Name | 6520B QTOF | User Name | |
| Acq Method | QTOF-002-HILIC-35min-1mm-No Insert.m | Acquired Time | 2/10/2015 7:51:08 PM |
| IRM Calibration Status | Success | DA Method | CentralCarbonMetab.m |
| Comment | | | |

Sample Group Info.

Acquisition SW 6200 series TOF/6500 series

Version Q-TOF B.05.01 (B5125.1)

| | | | |
|-------------------------------|---|----------------------|----------------------|
| Data Filename | 2015210-EX00393-QTOF6520-Dus-GlyTCA-neuro-Std00-f1-vol10-I2.d | Sample Name | sd0 |
| Sample Type | Sample | Position | P1-F1 |
| Instrument Name | 6520B QTOF | User Name | |
| Acq Method | QTOF-002-HILIC-35min-1mm-No Insert.m | Acquired Time | 2/12/2015 2:26:31 AM |
| IRM Calibration Status | Success | DA Method | CentralCarbonMetab.m |
| Comment | | | |

Sample Group Info.

Acquisition SW 6200 series TOF/6500 series

Version Q-TOF B.05.01 (B5125.1)

| | | | |
|-------------------------------|---|----------------------|----------------------|
| Data Filename | 2015210-EX00393-QTOF6520-Dus-GlyTCA-neuro-Std01-f2-vol10-I1.d | Sample Name | sd1 |
| Sample Type | Sample | Position | P1-F2 |
| Instrument Name | 6520B QTOF | User Name | |
| Acq Method | QTOF-002-HILIC-35min-1mm-No Insert.m | Acquired Time | 2/10/2015 8:29:04 PM |
| IRM Calibration Status | Success | DA Method | CentralCarbonMetab.m |
| Comment | | | |

Sample Group Info.

Acquisition SW 6200 series TOF/6500 series

Version Q-TOF B.05.01 (B5125.1)

| | | | |
|-------------------------------|---|----------------------|----------------------|
| Data Filename | 2015210-EX00393-QTOF6520-Dus-GlyTCA-neuro-Std01-f2-vol10-I2.d | Sample Name | sd1 |
| Sample Type | Sample | Position | P1-F2 |
| Instrument Name | 6520B QTOF | User Name | |
| Acq Method | QTOF-002-HILIC-35min-1mm-No Insert.m | Acquired Time | 2/12/2015 3:04:27 AM |
| IRM Calibration Status | Success | DA Method | CentralCarbonMetab.m |
| Comment | | | |

Sample Group Info.

Acquisition SW 6200 series TOF/6500 series

Version Q-TOF B.05.01 (B5125.1)

| | | | |
|-------------------------------|---|----------------------|----------------------|
| Data Filename | 2015210-EX00393-QTOF6520-Dus-GlyTCA-neuro-Std02-f3-vol10-I1.d | Sample Name | sd2 |
| Sample Type | Sample | Position | P1-F3 |
| Instrument Name | 6520B QTOF | User Name | |
| Acq Method | QTOF-002-HILIC-35min-1mm-No Insert.m | Acquired Time | 2/10/2015 9:07:01 PM |
| IRM Calibration Status | Success | DA Method | CentralCarbonMetab.m |
| Comment | | | |

Sample Group Info.

Acquisition SW 6200 series TOF/6500 series

Version Q-TOF B.05.01 (B5125.1)

| | | | |
|-------------------------------|---|----------------------|----------------------|
| Data Filename | 2015210-EX00393-QTOF6520-Dus-GlyTCA-neuro-Std02-f3-vol10-I2.d | Sample Name | sd2 |
| Sample Type | Sample | Position | P1-F3 |
| Instrument Name | 6520B QTOF | User Name | |
| Acq Method | QTOF-002-HILIC-35min-1mm-No Insert.m | Acquired Time | 2/12/2015 3:42:23 AM |
| IRM Calibration Status | Success | DA Method | CentralCarbonMetab.m |
| Comment | | | |

Sample Group Info.

Acquisition SW 6200 series TOF/6500 series

Version Q-TOF B.05.01 (B5125.1)

Qualitative Analysis Report

| | | | |
|-------------------------------|---|----------------------|----------------------|
| Data Filename | 2015210-EX00393-QTOF6520-Dus-GlyTCA-neuro-Std03-f4-vol10-I1.d | Sample Name | sd3 |
| Sample Type | Sample | Position | P1-F4 |
| Instrument Name | 6520B QTOF | User Name | |
| Acq Method | QTOF-002-HILIC-35min-1mm-No Insert.m | Acquired Time | 2/10/2015 9:45:00 PM |
| IRM Calibration Status | Success | DA Method | CentralCarbonMetab.m |
| Comment | | | |

| | |
|-----------------------|-----------------------------|
| Sample Group | Info. |
| Acquisition SW | 6200 series TOF/6500 series |
| Version | Q-TOF B.05.01 (B5125.1) |

| | | | |
|-------------------------------|---|----------------------|----------------------|
| Data Filename | 2015210-EX00393-QTOF6520-Dus-GlyTCA-neuro-Std03-f4-vol10-I2.d | Sample Name | sd3 |
| Sample Type | Sample | Position | P1-F4 |
| Instrument Name | 6520B QTOF | User Name | |
| Acq Method | QTOF-002-HILIC-35min-1mm-No Insert.m | Acquired Time | 2/12/2015 4:20:20 AM |
| IRM Calibration Status | Success | DA Method | CentralCarbonMetab.m |
| Comment | | | |

| | |
|-----------------------|-----------------------------|
| Sample Group | Info. |
| Acquisition SW | 6200 series TOF/6500 series |
| Version | Q-TOF B.05.01 (B5125.1) |

| | | | |
|-------------------------------|---|----------------------|-----------------------|
| Data Filename | 2015210-EX00393-QTOF6520-Dus-GlyTCA-neuro-Std04-f5-vol10-I1.d | Sample Name | sd4 |
| Sample Type | Sample | Position | P1-F5 |
| Instrument Name | 6520B QTOF | User Name | |
| Acq Method | QTOF-002-HILIC-35min-1mm-No Insert.m | Acquired Time | 2/10/2015 10:22:57 PM |
| IRM Calibration Status | Success | DA Method | CentralCarbonMetab.m |
| Comment | | | |

| | |
|-----------------------|-----------------------------|
| Sample Group | Info. |
| Acquisition SW | 6200 series TOF/6500 series |
| Version | Q-TOF B.05.01 (B5125.1) |

| | | | |
|-------------------------------|---|----------------------|----------------------|
| Data Filename | 2015210-EX00393-QTOF6520-Dus-GlyTCA-neuro-Std04-f5-vol10-I2.d | Sample Name | sd4 |
| Sample Type | Sample | Position | P1-F5 |
| Instrument Name | 6520B QTOF | User Name | |
| Acq Method | QTOF-002-HILIC-35min-1mm-No Insert.m | Acquired Time | 2/12/2015 4:58:16 AM |
| IRM Calibration Status | Success | DA Method | CentralCarbonMetab.m |
| Comment | | | |

| | |
|-----------------------|-----------------------------|
| Sample Group | Info. |
| Acquisition SW | 6200 series TOF/6500 series |
| Version | Q-TOF B.05.01 (B5125.1) |

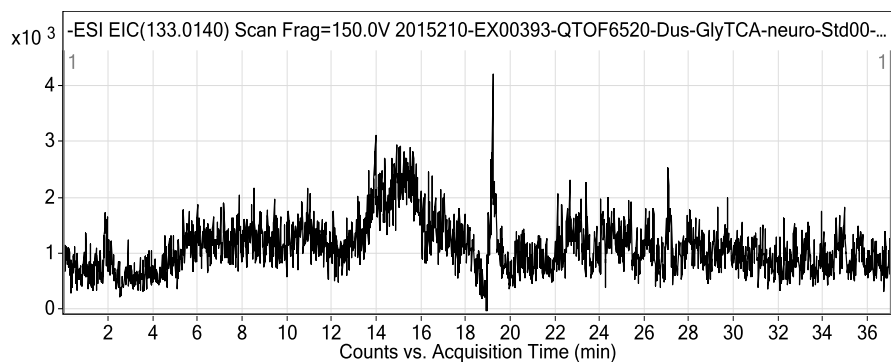
| | | | |
|-------------------------------|--|----------------------|-----------------------|
| Data Filename | 2015210-EX00393-QTOF6520-Dus-GlyTCA-neuro-Std04-f5-vol10-I2a.d | Sample Name | sd4 |
| Sample Type | Sample | Position | P1-F5 |
| Instrument Name | 6520B QTOF | User Name | |
| Acq Method | QTOF-002-HILIC-35min-1mm-No Insert.m | Acquired Time | 2/11/2015 10:38:23 AM |
| IRM Calibration Status | Success | DA Method | CentralCarbonMetab.m |
| Comment | | | |

| | |
|-----------------------|-----------------------------|
| Sample Group | Info. |
| Acquisition SW | 6200 series TOF/6500 series |
| Version | Q-TOF B.05.01 (B5125.1) |

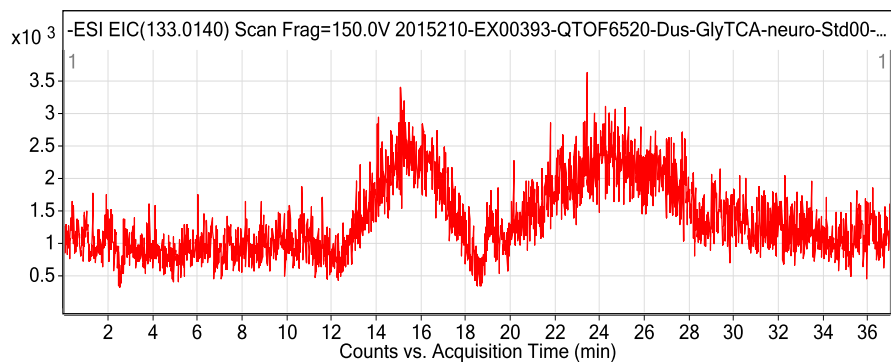
User Chromatograms

| | | | | | |
|---------------------------|-----|-------------------------|---|------------------------|-----|
| Fragmentor Voltage | 150 | Collision Energy | 0 | Ionization Mode | ESI |
|---------------------------|-----|-------------------------|---|------------------------|-----|

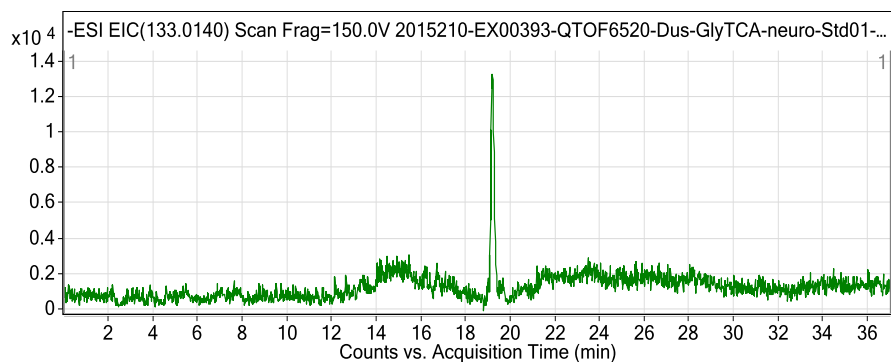
Qualitative Analysis Report



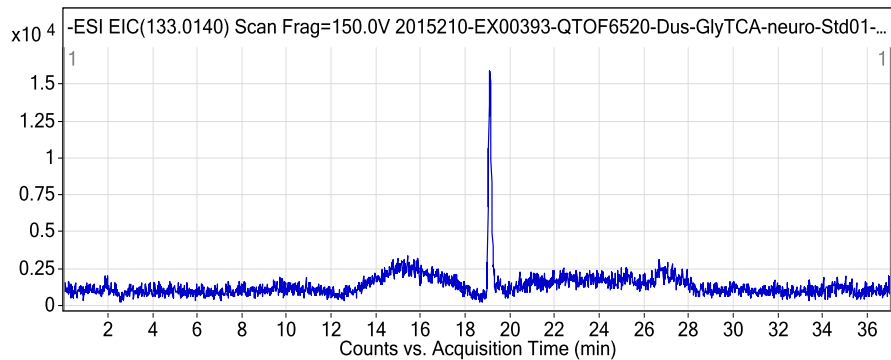
Fragmentor Voltage 150 Collision Energy 0 Ionization Mode ESI



Fragmentor Voltage 150 Collision Energy 0 Ionization Mode ESI

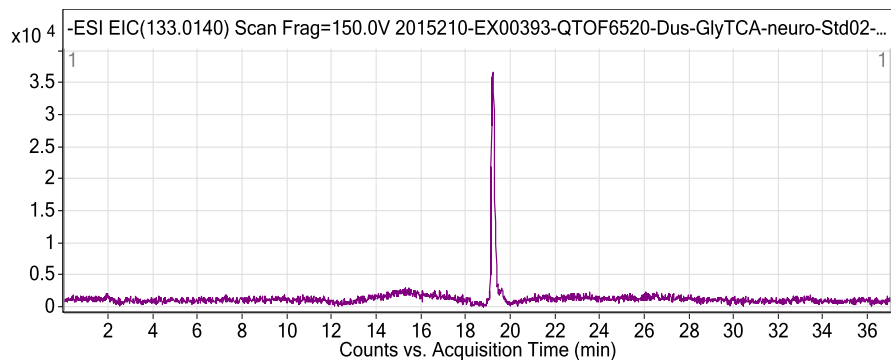


Fragmentor Voltage 150 Collision Energy 0 Ionization Mode ESI

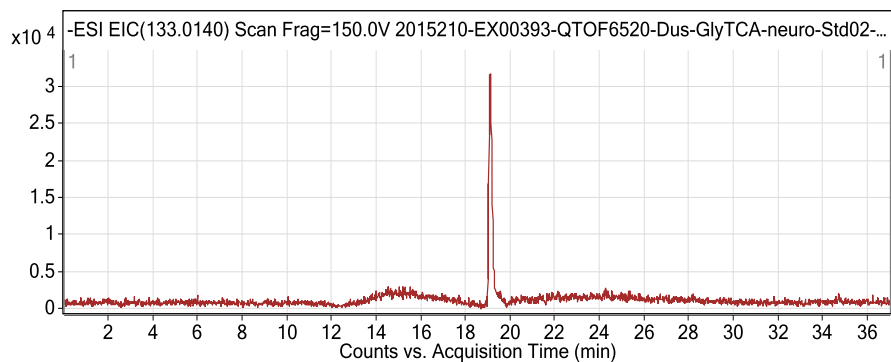


Fragmentor Voltage 150 Collision Energy 0 Ionization Mode ESI

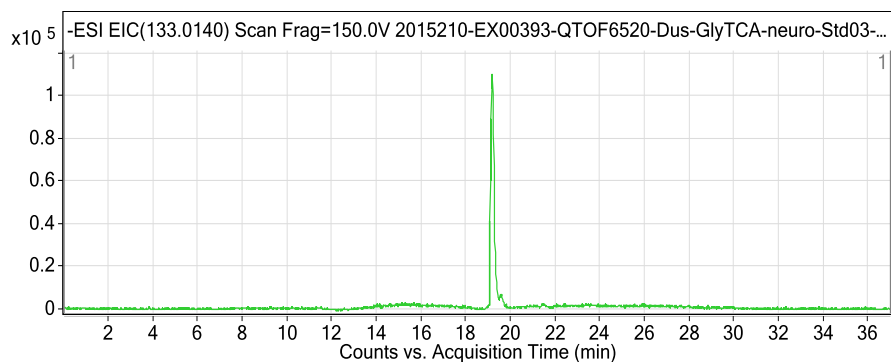
Qualitative Analysis Report



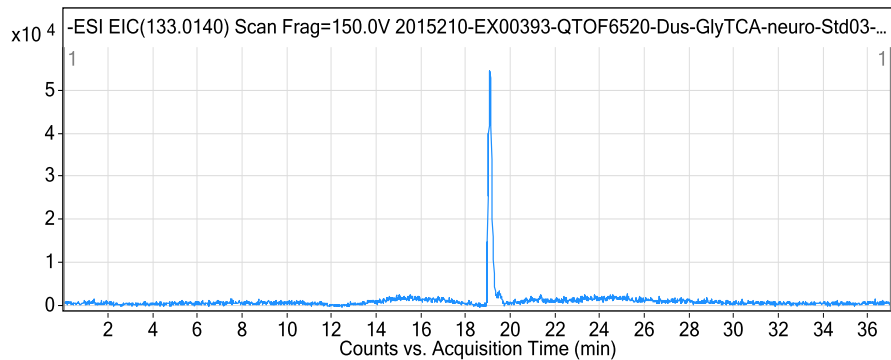
Fragmentor Voltage 150 Collision Energy 0 Ionization Mode ESI



Fragmentor Voltage 150 Collision Energy 0 Ionization Mode ESI

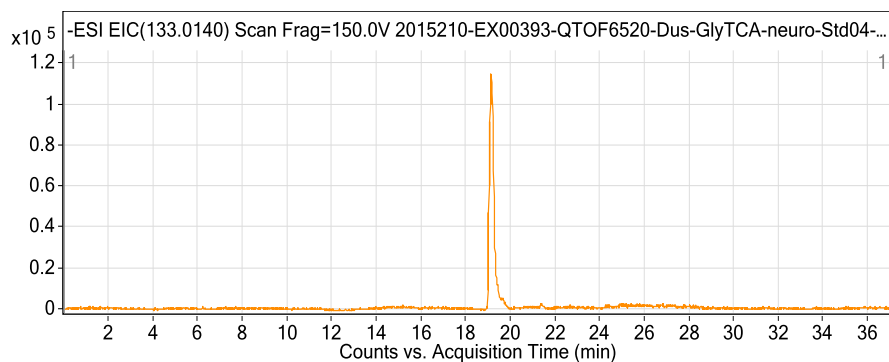


Fragmentor Voltage 150 Collision Energy 0 Ionization Mode ESI

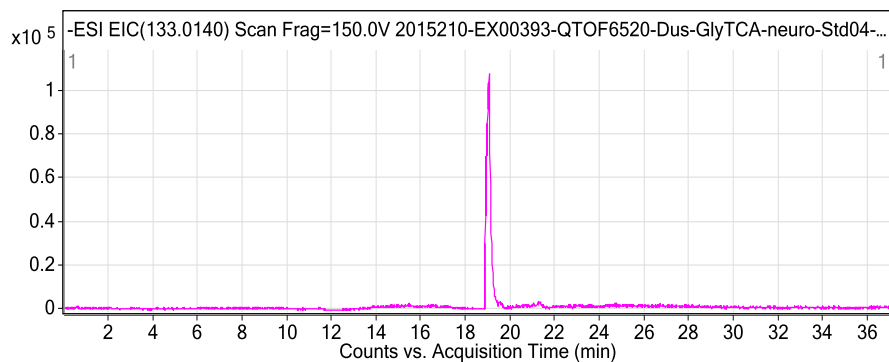


Fragmentor Voltage 150 Collision Energy 0 Ionization Mode ESI

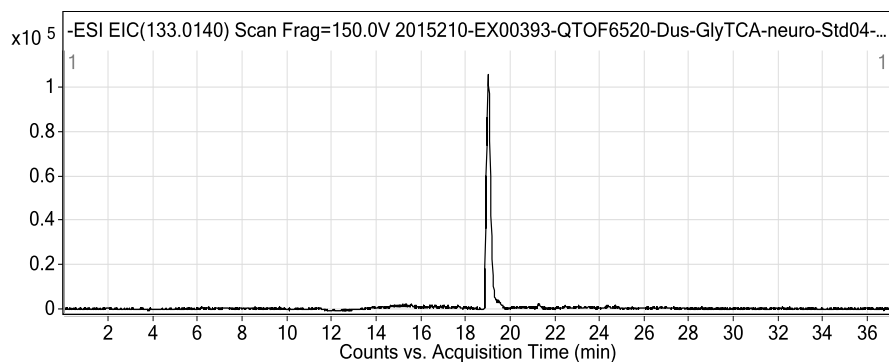
Qualitative Analysis Report



Fragmentor Voltage 150 Collision Energy 0 Ionization Mode ESI



Fragmentor Voltage 150 Collision Energy 0 Ionization Mode ESI



--- End Of Report ---