

Qualitative Analysis Report

Data Filename	2015210-EX00393-QTOF6520-Dus-GlyTCA-neuro-Std00-f1-vol10-I1.d	Sample Name	sd0
Sample Type	Sample	Position	P1-F1
Instrument Name	6520B QTOF	User Name	
Acq Method	QTOF-002-HILIC-35min-1mm-No Insert.m	Acquired Time	2/10/2015 7:51:08 PM
IRM Calibration Status	Success	DA Method	CentralCarbonMetab.m
Comment			

Sample Group Info.

Acquisition SW 6200 series TOF/6500 series

Version Q-TOF B.05.01 (B5125.1)

Data Filename	2015210-EX00393-QTOF6520-Dus-GlyTCA-neuro-Std00-f1-vol10-I2.d	Sample Name	sd0
Sample Type	Sample	Position	P1-F1
Instrument Name	6520B QTOF	User Name	
Acq Method	QTOF-002-HILIC-35min-1mm-No Insert.m	Acquired Time	2/12/2015 2:26:31 AM
IRM Calibration Status	Success	DA Method	CentralCarbonMetab.m
Comment			

Sample Group Info.

Acquisition SW 6200 series TOF/6500 series

Version Q-TOF B.05.01 (B5125.1)

Data Filename	2015210-EX00393-QTOF6520-Dus-GlyTCA-neuro-Std01-f2-vol10-I1.d	Sample Name	sd1
Sample Type	Sample	Position	P1-F2
Instrument Name	6520B QTOF	User Name	
Acq Method	QTOF-002-HILIC-35min-1mm-No Insert.m	Acquired Time	2/10/2015 8:29:04 PM
IRM Calibration Status	Success	DA Method	CentralCarbonMetab.m
Comment			

Sample Group Info.

Acquisition SW 6200 series TOF/6500 series

Version Q-TOF B.05.01 (B5125.1)

Data Filename	2015210-EX00393-QTOF6520-Dus-GlyTCA-neuro-Std01-f2-vol10-I2.d	Sample Name	sd1
Sample Type	Sample	Position	P1-F2
Instrument Name	6520B QTOF	User Name	
Acq Method	QTOF-002-HILIC-35min-1mm-No Insert.m	Acquired Time	2/12/2015 3:04:27 AM
IRM Calibration Status	Success	DA Method	CentralCarbonMetab.m
Comment			

Sample Group Info.

Acquisition SW 6200 series TOF/6500 series

Version Q-TOF B.05.01 (B5125.1)

Data Filename	2015210-EX00393-QTOF6520-Dus-GlyTCA-neuro-Std02-f3-vol10-I1.d	Sample Name	sd2
Sample Type	Sample	Position	P1-F3
Instrument Name	6520B QTOF	User Name	
Acq Method	QTOF-002-HILIC-35min-1mm-No Insert.m	Acquired Time	2/10/2015 9:07:01 PM
IRM Calibration Status	Success	DA Method	CentralCarbonMetab.m
Comment			

Sample Group Info.

Acquisition SW 6200 series TOF/6500 series

Version Q-TOF B.05.01 (B5125.1)

Data Filename	2015210-EX00393-QTOF6520-Dus-GlyTCA-neuro-Std02-f3-vol10-I2.d	Sample Name	sd2
Sample Type	Sample	Position	P1-F3
Instrument Name	6520B QTOF	User Name	
Acq Method	QTOF-002-HILIC-35min-1mm-No Insert.m	Acquired Time	2/12/2015 3:42:23 AM
IRM Calibration Status	Success	DA Method	CentralCarbonMetab.m
Comment			

Sample Group Info.

Acquisition SW 6200 series TOF/6500 series

Version Q-TOF B.05.01 (B5125.1)

Qualitative Analysis Report

Data Filename	2015210-EX00393-QTOF6520-Dus-GlyTCA-neuro-Std03-f4-vol10-I1.d	Sample Name	sd3
Sample Type	Sample	Position	P1-F4
Instrument Name	6520B QTOF	User Name	
Acq Method	QTOF-002-HILIC-35min-1mm-No Insert.m	Acquired Time	2/10/2015 9:45:00 PM
IRM Calibration Status	Success	DA Method	CentralCarbonMetab.m
Comment			

Sample Group	Info.
Acquisition SW	6200 series TOF/6500 series
Version	Q-TOF B.05.01 (B5125.1)

Data Filename	2015210-EX00393-QTOF6520-Dus-GlyTCA-neuro-Std03-f4-vol10-I2.d	Sample Name	sd3
Sample Type	Sample	Position	P1-F4
Instrument Name	6520B QTOF	User Name	
Acq Method	QTOF-002-HILIC-35min-1mm-No Insert.m	Acquired Time	2/12/2015 4:20:20 AM
IRM Calibration Status	Success	DA Method	CentralCarbonMetab.m
Comment			

Sample Group	Info.
Acquisition SW	6200 series TOF/6500 series
Version	Q-TOF B.05.01 (B5125.1)

Data Filename	2015210-EX00393-QTOF6520-Dus-GlyTCA-neuro-Std04-f5-vol10-I1.d	Sample Name	sd4
Sample Type	Sample	Position	P1-F5
Instrument Name	6520B QTOF	User Name	
Acq Method	QTOF-002-HILIC-35min-1mm-No Insert.m	Acquired Time	2/10/2015 10:22:57 PM
IRM Calibration Status	Success	DA Method	CentralCarbonMetab.m
Comment			

Sample Group	Info.
Acquisition SW	6200 series TOF/6500 series
Version	Q-TOF B.05.01 (B5125.1)

Data Filename	2015210-EX00393-QTOF6520-Dus-GlyTCA-neuro-Std04-f5-vol10-I2.d	Sample Name	sd4
Sample Type	Sample	Position	P1-F5
Instrument Name	6520B QTOF	User Name	
Acq Method	QTOF-002-HILIC-35min-1mm-No Insert.m	Acquired Time	2/12/2015 4:58:16 AM
IRM Calibration Status	Success	DA Method	CentralCarbonMetab.m
Comment			

Sample Group	Info.
Acquisition SW	6200 series TOF/6500 series
Version	Q-TOF B.05.01 (B5125.1)

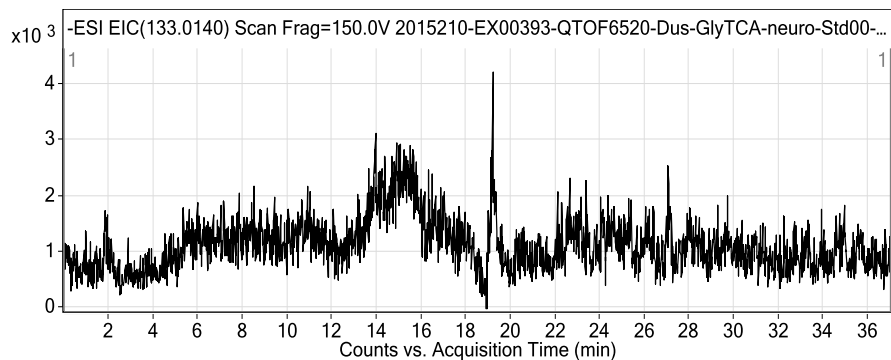
Data Filename	2015210-EX00393-QTOF6520-Dus-GlyTCA-neuro-Std04-f5-vol10-I2a.d	Sample Name	sd4
Sample Type	Sample	Position	P1-F5
Instrument Name	6520B QTOF	User Name	
Acq Method	QTOF-002-HILIC-35min-1mm-No Insert.m	Acquired Time	2/11/2015 10:38:23 AM
IRM Calibration Status	Success	DA Method	CentralCarbonMetab.m
Comment			

Sample Group	Info.
Acquisition SW	6200 series TOF/6500 series
Version	Q-TOF B.05.01 (B5125.1)

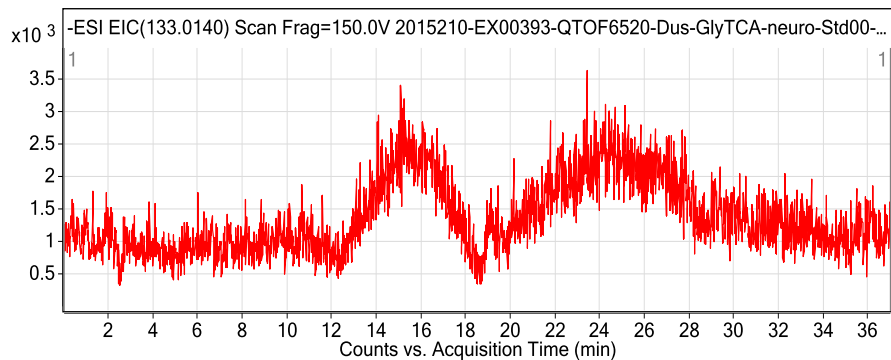
User Chromatograms

Fragmentor Voltage	150	Collision Energy	0	Ionization Mode	ESI
---------------------------	-----	-------------------------	---	------------------------	-----

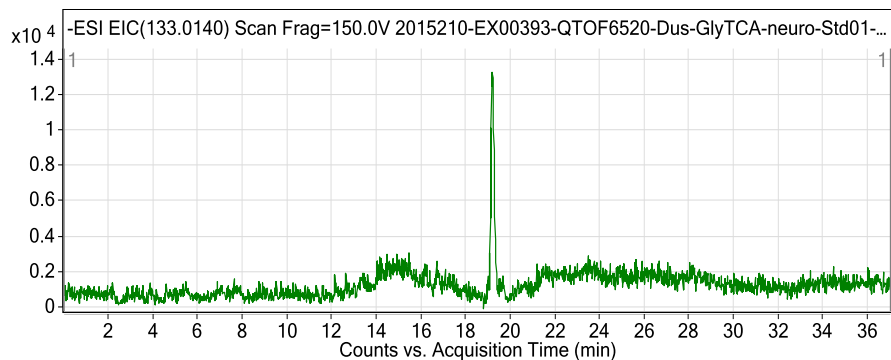
Qualitative Analysis Report



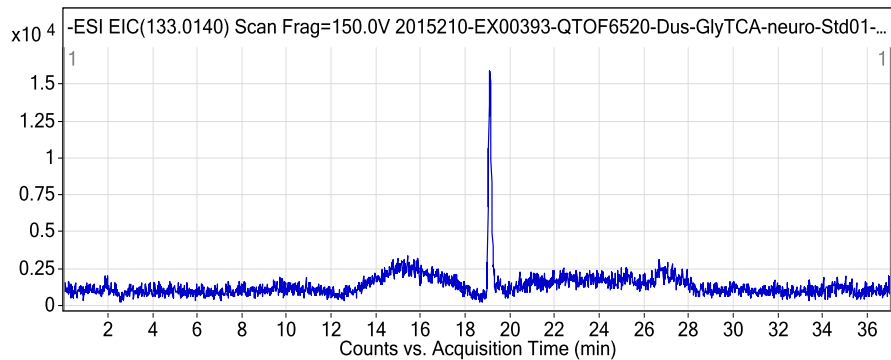
Fragmentor Voltage 150 Collision Energy 0 Ionization Mode ESI



Fragmentor Voltage 150 Collision Energy 0 Ionization Mode ESI

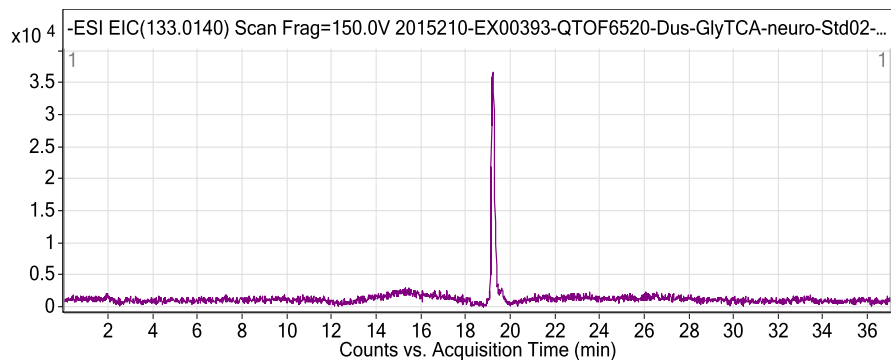


Fragmentor Voltage 150 Collision Energy 0 Ionization Mode ESI

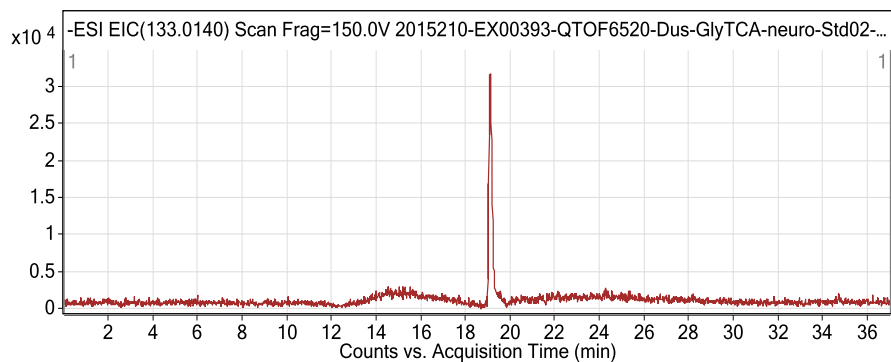


Fragmentor Voltage 150 Collision Energy 0 Ionization Mode ESI

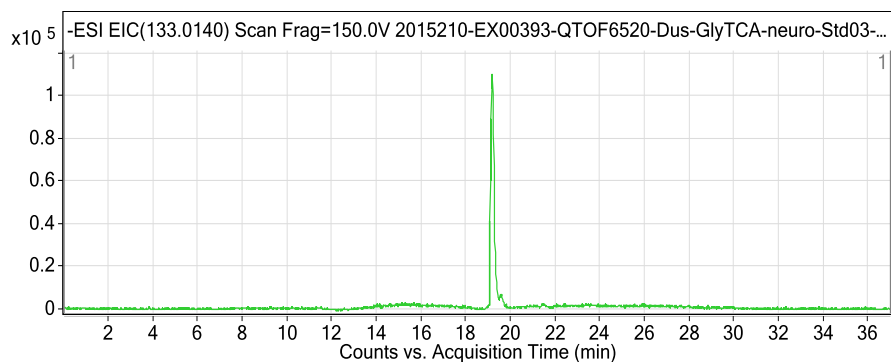
Qualitative Analysis Report



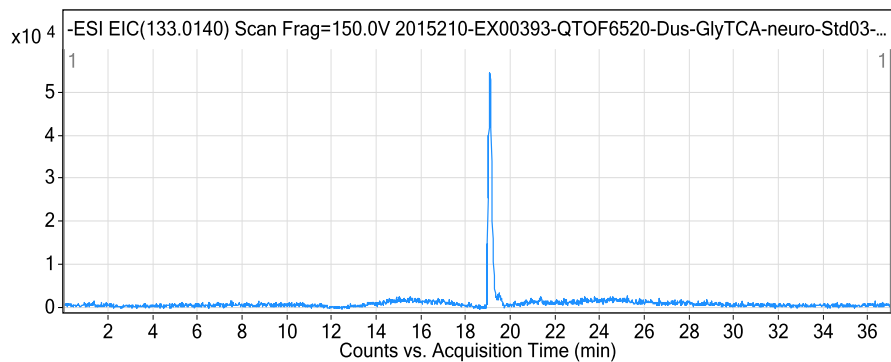
Fragmentor Voltage 150 Collision Energy 0 Ionization Mode ESI



Fragmentor Voltage 150 Collision Energy 0 Ionization Mode ESI

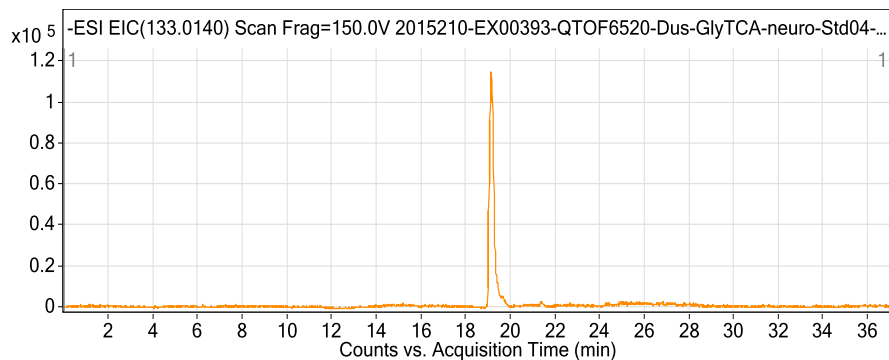


Fragmentor Voltage 150 Collision Energy 0 Ionization Mode ESI

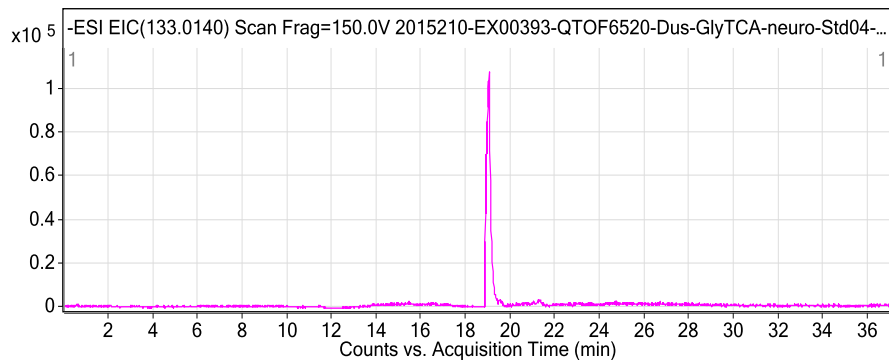


Fragmentor Voltage 150 Collision Energy 0 Ionization Mode ESI

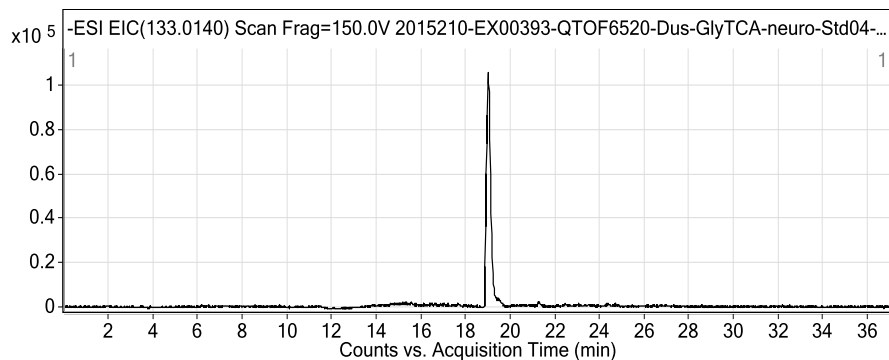
Qualitative Analysis Report



Fragmentor Voltage 150 Collision Energy 0 Ionization Mode ESI



Fragmentor Voltage 150 Collision Energy 0 Ionization Mode ESI



--- End Of Report ---